

# A VERY MERRY WIDOW

Die lustige Witwe  
OPERETTA GOES JAZZ

10 Piano Arrangements  
by 10 Jazz Composers



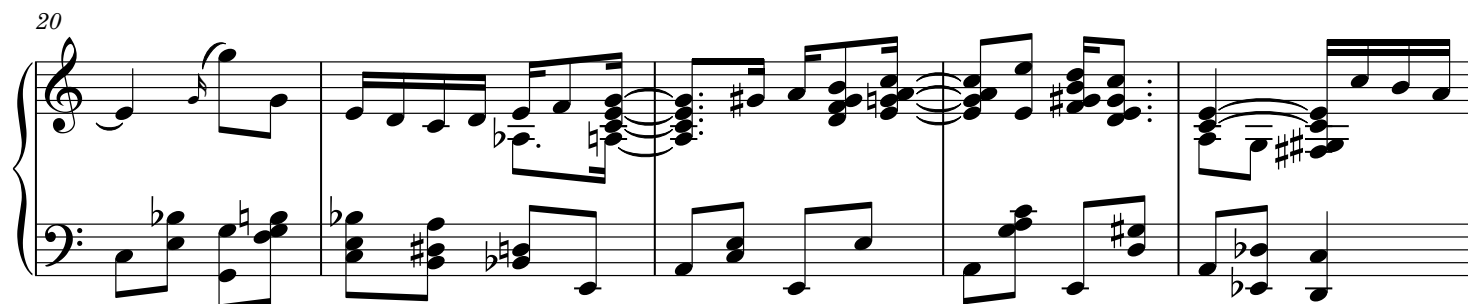
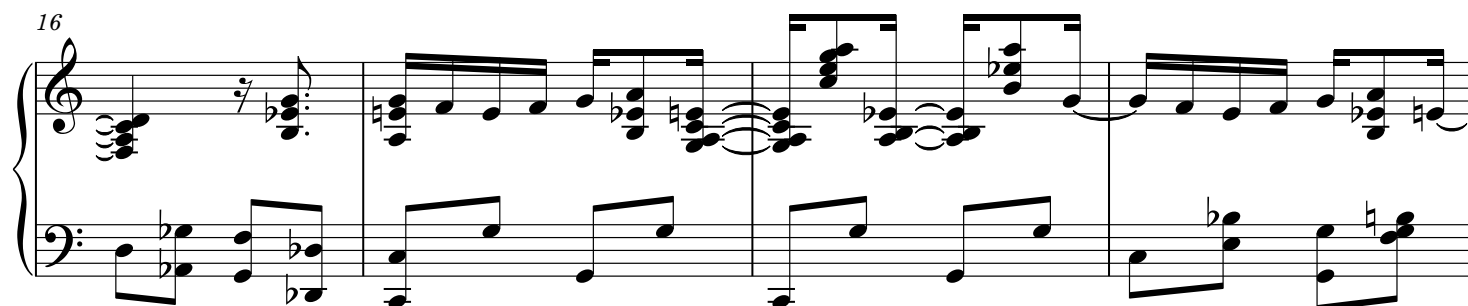
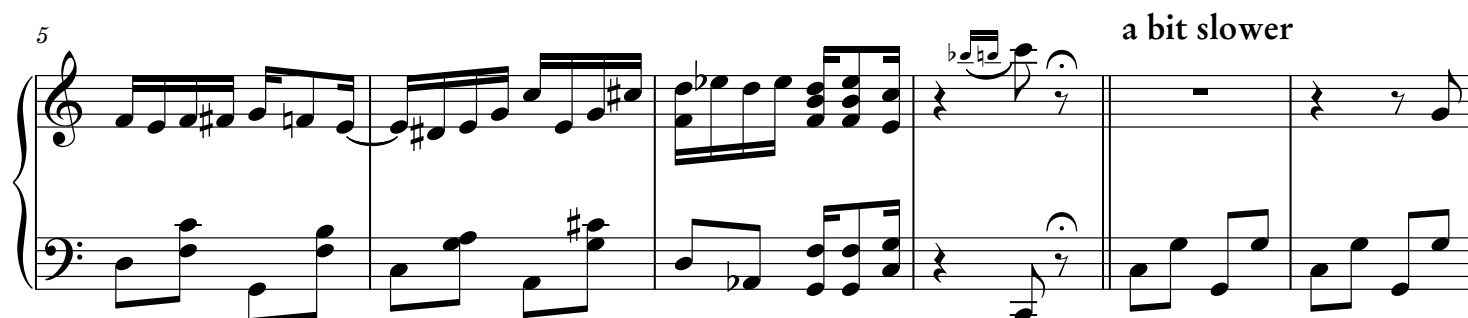
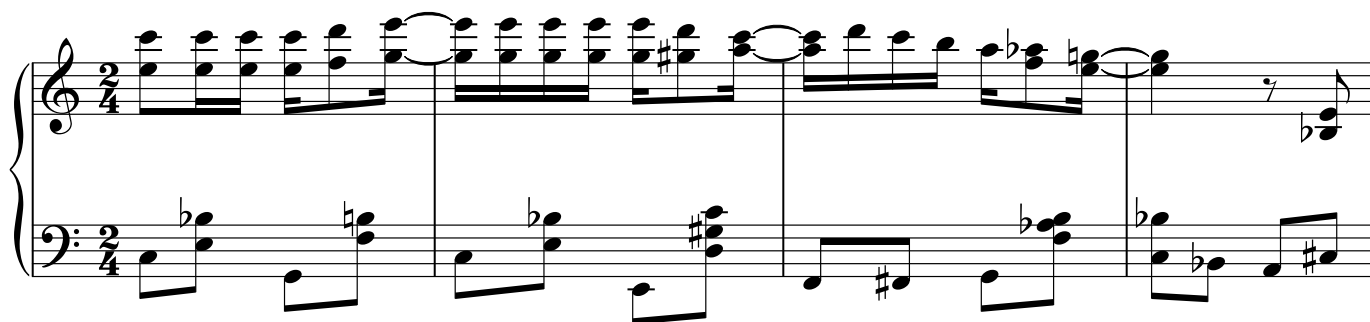
# Da geh' ich zu Maxim

(Contemporary Jazz Piano Version  
on «I'm off to Chez Maxime»)

Franz Lehár

arranged by Johannes Berauer

Ragtime ♩ = ca. 96



# Ach, die Weiber!

(Contemporary Jazz Piano Version  
on «You're back where you first began»)

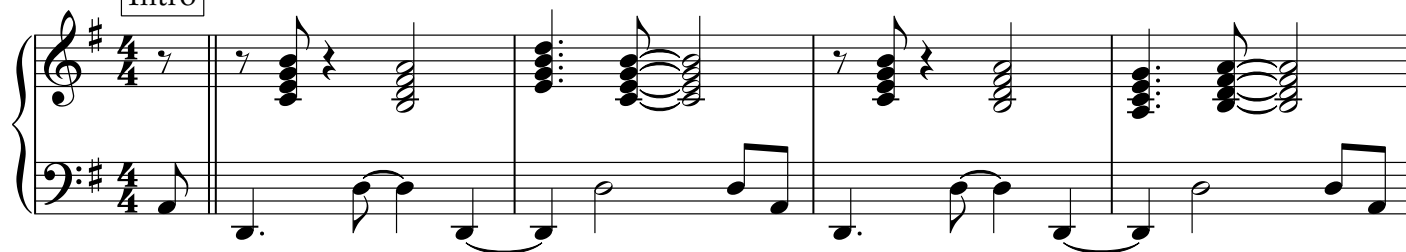
Franz Lehár

arranged by Andreas Hertel

**Straight ahead swing**

$\text{♩} = \text{♩} \text{ } \text{♩} = \text{ca. } 160-180$

Intro



**A Theme**



# Cute & Cheeky

43

(Contemporary Jazz Piano Version  
on «Grisette Song»)

**Franz Lehár**  
arranged by Michael Publig

Medium fast Latin  $\text{♩} = \text{ca. } 96$

N.C.

5

9

12

15

A<sup>13</sup> D<sup>9</sup> F<sup>#7(#9)</sup>

B<sup>7(#9)</sup> E<sup>9</sup> G<sup>6/A</sup> E<sup>bΔ(#11)</sup> A<sup>7</sup>

# Lippen schweigen

(Contemporary Jazz Piano Version  
on «Love unspoken»)

Franz Lehár  
arranged by Roland Batik

Waltz, with some Jazz feeling ♩ =  $\overset{\frown}{\underset{\frown}{\text{♩}}}^3$

Measures 1-8 of the piano score. The key signature is one sharp (F#) and the time signature is 3/4. The score features a waltz-like feel with triplets. Dynamics include *mf* (measures 1-2) and *fz* (measures 3-4). The piece concludes with a repeat sign in measure 8.

Measures 9-12 of the piano score. The key signature changes to two flats (Bb, Eb). The music continues with triplets and a forte (*f*) dynamic.

Measures 13-16 of the piano score. The key signature changes to one flat (Bb). The music features complex triplet patterns and a *rin fz* (ritardando, fortissimo) dynamic in measure 16.

Measures 17-20 of the piano score. The key signature changes to one sharp (F#). The tempo/mood is marked *dolce, legato* and *(lightly)*. The dynamic is *p* (piano). Measure 20 ends with a triplet.

Measures 21-24 of the piano score. The key signature changes to two flats (Bb, Eb). The music features triplets and a *dim.* (diminuendo) dynamic in measure 24.